



ST. LOUIS MAGAZINE PRESENTS 2011 SAINT LOUIS ART FAIR OFFICIAL PROGRAM

POSITION YOUR BUSINESS IN FRONT OF MORE THAN 150,000 ART FAIR ATTENDEES AND NEARLY 200,000 SLM READERS

FEATURED ARTISTS



Jonathan Doe
PRINTMAKING
123-456-7890
booth #: 00123

www.jondoeprintmaking.com



Jonathan Doe
PRINTMAKING
123-456-7890
booth #: 00123

www.jondoeprintmaking.com



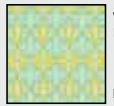
Jonathan Doe
PRINTMAKING
123-456-7890
booth #: 00123

www.jondoeprintmaking.com



Jonathan Doe
PRINTMAKING
123-456-7890
booth #: 00123

www.jondoeprintmaking.com



Jonathan Doe
PRINTMAKING
123-456-7890
booth #: 00123

www.jondoeprintmaking.com



Jonathan Doe
PRINTMAKING
123-456-7890
booth #: 00123

www.jondoeprintmaking.com



Jonathan Doe
PRINTMAKING
123-456-7890
booth #: 00123

www.jondoeprintmaking.com



Jonathan Doe
PRINTMAKING
123-456-7890
booth #: 00123

www.jondoeprintmaking.com



Jonathan Doe
PRINTMAKING
123-456-7890
booth #: 00123

www.jondoeprintmaking.com



Jonathan Doe
PRINTMAKING
123-456-7890
booth #: 00123

www.jondoeprintmaking.com

A ST. LOUIS TRADITION

During its 17-year run, the Saint Louis Art Fair, organized by Cultural Festivals, has garnered immense critical, popular and financial success. Held on 10 city blocks in downtown Clayton, it's now recognized as one of the top-five-ranked art fairs in the nation and draws visitors from around the country.

FEATURED LISTING

- Photo of Your Work
- Booth Number
- Contact Information
- Website

\$295 (10 per page)

FEATURE YOUR INFORMATION ONLINE

(STLMAG.com)

- Photo of Your Work
- Contact Information
- Link to Your Website

\$180/year

YES, I WOULD LIKE TO BE FEATURED!

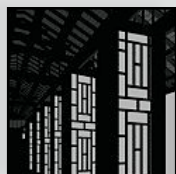
NAME: _____ **BOOTH NUMBER:** _____

ADDRESS: _____

CITY, STATE, ZIP: _____

PHONE: _____ **EMAIL:** _____

WEB ADDRESS: _____



Jonathan Doe
PRINTMAKING

123-456-7890

booth #: 00123

www.jondoeprintmaking.com

NAME

MEDIUM

PHONE #

BOOTH #

WEB ADDRESS

StLouis
MAGAZINE

Space is limited!
Don't Miss This
Valuable Opportunity

**CALL 314-863-0278
TO RESERVE SPACE**